

Mobile Viewing for iPhone

User Menu

1. System requires

| | |
|-------------------|---|
| Support Device | iPhone or iPod 2.0 or greater is required |
| Space Required | >800 KB Free space |
| Software required | iTunes (optional) |

2. Install

- 1) Open your iPhone and click [App Store](#).
- 2) Under search bar ,typing “[Meye sun](#)” and click search button. Download the Mobile Viewing Application for free, the file name is [Meye](#).
- 3) Click the [Meye](#) icon, The application begins to install on your iPhone.

3. Uninstall

Under your iPhone main menu, Press and hold the [Meye](#) icon for a few seconds, you will see the Delete Button to uninstall the [Meye](#).

4. Main menu

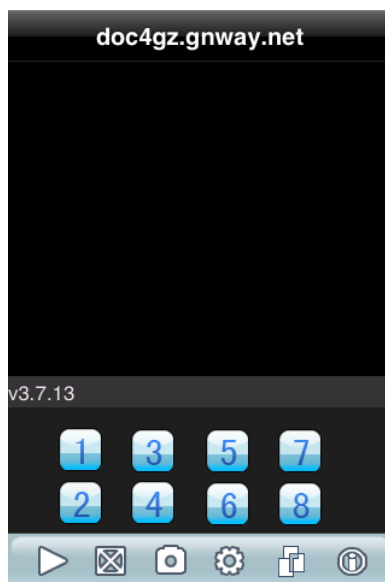







Figure 1 Main menu

| Icon | Function | Description |
|---|-------------|--|
|  | Play | Connecting to your cameras |
|  | Full Screen | Switch full screen or window |
|  | Snap Shot | Capture the image from your camera |
|  | Settings | Setup your ip_address and port and your account info |
|  | Next group | Next channel group (1~4, 5~8, 9~12, 13~16) |

5. Connecting To Your Cameras

Once the application is installed on your phone, you can log in and access your system.

To use mobile viewing:

The screenshot shows an iPhone 'Settings' screen with a blue header containing 'Back' and 'Cancel' buttons. Below the header, there are two sections: 'Server Info' and 'Account Info'. Each section contains two input fields with a small 'x' icon to clear the text. The 'Server Info' section has 'Address' set to 'doc4gz.gnway.net' and 'Port' set to '18600'. The 'Account Info' section has 'User ID' set to 'admin' and 'Password' masked with six dots.

Figure 2 settings

1. From your iPhone, click the [Meye](#) icon.
2. Click Settings. In the Username field enter [admin](#); in the Password field enter [admin](#).

3. Under Server info, enter the IP address of your system.

4. Under Port, enter the port number of your system.

NOTE: You can only view one channel at a time.

6. Click Back. And click play, The Mobile Viewer will connect automatically.

7. Use the Channel number Button to switch between cameras.

If you are having trouble connecting, please check the wireless network configuration on your phone.